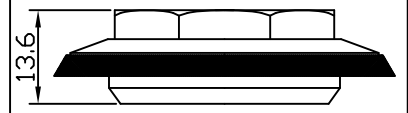


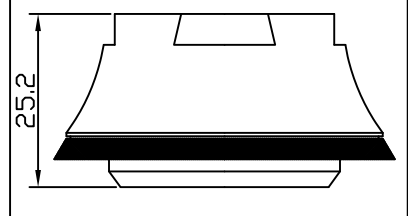
堆積高度(STACK HEIGHT)=23.2±1mm

可選配之上塞高度
(TOP COVER IS OPTIONAL)

型號(MODEL NO.): H108L



型號(MODEL NO.): H108H



HEAD TUBE(頭管)

- 半隱藏式車頭碗組
- 1" (25.4mm) 有牙前叉立管(BC 1" x24T)
- 車頭管 內徑/外徑=44/50mm
- 鋁合金(6061)上迫緊及上塞及上下碗
- 鐵下塞(內徑27mm或26.4mm)
- 卡式軸承

NO.	零件名稱 PART NAME	材質 MATERIAL	圖號 DRAWING NO.	台量 Q'TY	尺寸 DIM. DESCRIPTION
1	鋁防水上迫緊 LOCK NUT	鋁合金 6061/T6	807-1	1	BC 1" x24T
2	有領華司 KEY WASHER	碳鋼 STEEL	SK3002	1	1"
3	鋁上塞 ADJUSTING CONE	鋁合金 6061/T6	108-3	1	BC 1" x24T
4	防塵蓋 DUST-RESISTED COVER	塑膠 NYLON	118-8	1	
5	卡式軸承 CARTRIDGE BALL BEARINGS	鉻鉬鋼 CR-MO STEEL	CBB-41	2	OD41x36°x45°
6	鋁碗 CUPS	鋁合金 6061/T6	125-4/5	2	∅44±0.15
7	下塞 CROWN RACE	碳鋼 STEEL	124-6	1	∅27(∅26.4)±0.1

- Semi-integrated headset
- For 1" threaded steerer(BC 1" x24T)
- Headtube ID./OD. = 44/50mm
- 6061/T6 cnc machined lock nut and adjusting cone with seals
- 6061/T6 forged & cnc machined alloy cups
- Cold-forged steel crown race (inner diameter 27mm or 26.4mm)
- Cartridge ball bearings

單位 UNIT	mm	比例 SCALE	1:1	日期 DRAWING DATE	2001.03.09	角法 VIEW	
型號 ITEM NO.	NECO 108/108H						版次(REV):A
品名 PART NAME	H108/H108H 組立圖(Assembly Drawing)						
規格 DIMENSION	∅22.2x44/50x27(26.4)						
圖號 PART NO.	H108(H108H)-組立圖-A						

NECO®

誌慶工業股份有限公司